



Manoeuvrable and versatile

Lower costs, higher comfort

Bucher Schörling sets high standards for the quality and durability of its sweepers. These same high standards are also applied to driving comfort. Ergonomically designed control elements, easy handling and accessibility of all units for maintenance purposes help to ensure focused work, even during long hours of operation.

High performance and efficiency

Bucher Schörling's sweepers sets standards in efficient street cleaning. With a hopper capacity from 5 to 10 cubic metres, it is perfectly suited for working on industrial sites and large traffic surfaces.

As a standard, the sweepers are equipped with a stainless steel water tank with a capacity from 1100 to 4000 litre. Long operating hours on extremely dirty roads are therefore managed without difficulty. The full range of useful options considerably increases our sweepers versatility.

A swivel main brush and an additional sweeping device for left and right-hand operation, all contribute impressively to this sweeper's versatility, making it an extremely economical all rounder.



Control panel

The newly designed, ergonomic control panel provides a high level of driver comfort through sensibly grouped, non-reflective instruments and easily understandable pictograms.



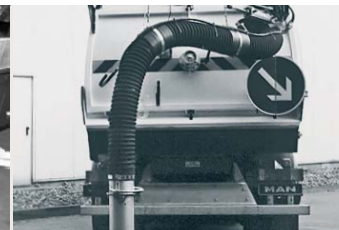
Sweeping device

Pushed type side brush for left and right side cleaning. The fully extended sweeping device is clearly visible to the driver at all times.



Suction unit

Heavy duty tyres supporting the suction nozzles ensure extended durability



Suction wand hose

The suction wand hose for cleaning catch basins and for suction behind crash barriers and other difficult places, can be swivelled 180 degrees. (Option)

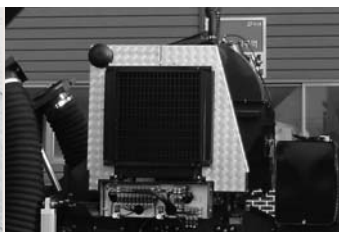
Custom oriented technology and engineering

With many years of experience in sweeper manufacturing, Bucher Schörling's engineers and technicians are committed to develop solutions for specific requirements. In close consultation with field experts, new and special applications in city cleaning are addressed and economical improvement concepts developed and applied. Our range of sweepers can be mounted on to most standard chassis available on the market.



Suction wand hose extension with remote control

The suction wand hose extension with remote control: electro-pneumatic lifting and lowering and remote control allow for significantly easier operation. (Option)



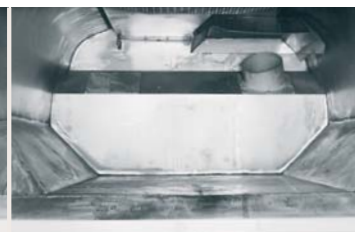
Suction fan unit

The main unit is the suction fan with an auxiliary engine from 60Kw(80hps) up to 93Kw(125hps).



Air guide screen

The airguide screen can be pneumatically operated for easy hopper cleaning and maintenance. All units in the suction area are easily accessible.



Hopper and water tank

The very sturdy and rigid hopper design equipped with a large stainless steel water tank to ensure long and trouble free use.

The versatile Bucher Schörling sweepers

Cities, municipalities and private companies, everywhere everyone benefits from the versatility of Bucher Schörling's range of sweepers.

Call us for a demonstration! Let us show you the range of vehicle configurations available to respond to your particular requirements.



Sweeping device

Trailed type side brush for left and right side cleaning.
Tiltable side brush. (option)



Camera

Equipped with a wide-angle lens and a high resolution display, ensuring excellent overall view when sweeping in narrow alleys or when reversing.



Magnet bar

Permanent magnetic bar mounted at the rear to pick up metal debris. (FOD)



Stainless steel hopper

Sweepers with fully equipped stainless steel hoppers give the assurances of a long durability. (Option)

Professional service Bucher Schörling's worldwide success is based on its extensive distribution network with qualified advisors and a focus on customer needs. At Bucher Schörling, service begins at the drawing board when we design vehicles tailored to accommodate our customer's specific requirements. We are renowned for our sound, competent advice and reliable service. This is assured by knowledgeable and well trained staff and distribution centres all over the world offering always fast delivery of original spare parts, a fleet of mobile service vehicles and long term supply guarantees.

Certified quality – economic operation Committed to quality, Bucher Schörling strives to ensure continuous machine uptime, long life and low maintenance. Our competence centres are fully ISO 9001:2000 certified, providing vehicles that deliver the best value for money.

06/2007

Bucher Schörling Korea Ltd.
Sihwa Industrial Complex
3Ma 819Ho, Chungwang-Dong
Siheung-City, Kyunggi-Do
Korea 429-450
Phone +82 31 498 89 61-3
Fax +82 31 498 89 85
info@bucherschoerling.co.kr

Bucher-Guyer AG
Municipal Vehicles
Murzlenstrasse 80
CH-8166 Niederweningen
Switzerland
Phone +41 44 857 22 11
Fax +41 44 857 24 10
info@bucherschoerling.ch



CityFant 60 - 6 cubic metre sweeper

CityFant 50
CityFant 60
OmniFant 80